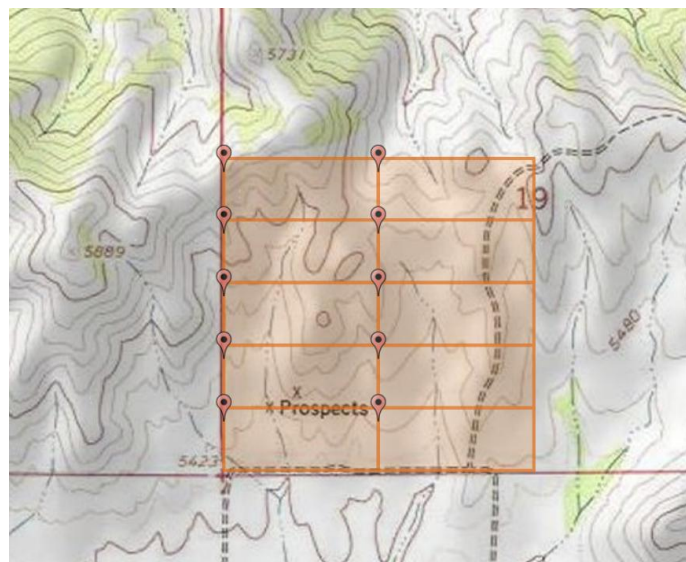


## **“Jingo” Idaho Gold/Silver Project**

### High Grade Historical Production and Consistent Gold Found in Modern Exploration

**Summary:** The project features a large fissure vein ranging from 1 to 6 feet wide. Past development includes 600 feet of tunneling from which shipping ore averaged 1.28 oz/ton gold and 6.70 oz/ton silver. Sampling of the dumps has returned values as high as 1.057 oz/ton gold and 11.25 oz/ton silver. Samples from the vein system consistently show significant gold values.

**Location:** The Jingo Gold project is located in the Pine Grove Mining District, Elmore County, Idaho. It is situated approximately 54 road miles north-northeast of Mountain Home and 21 miles west of Fairfield. There is a road directly to the project. The coordinates are 43.405970, -115.196572.



**History:** Discovered around 1893 (originally located as the Jumbo and Hercules claims). By 1903, the mines were extensively operated under bond by a Salt Lake company, which completed six hundred feet of development on the large fissure vein. Early reports noted average gold values ranging from \$15 to \$25 per ton (historical prices) with occasional bodies of high-grade shipping ore.

In 1933, records indicate a shipment of 153 tons of ore yielding 1.28 oz/ton gold and 6.70 oz/ton silver. In the mid-1980s, Sunshine Mining Company and other operators conducted geological mapping and sampling programs. These modern efforts confirmed high-grade values, with rock chip samples assaying up to 0.532 oz/ton gold, and extensive lower grade gold values.

**Geology:** The project targets a long, discontinuous epithermal bull quartz vein system striking North 60° East with a steep dip of 75° to 90° South. The vein pinches and swells along strike, reaching a maximum width of approximately ten feet in the vicinity of the old workings. The vein appears to be in fault contact with Cretaceous granite on the north and younger dacites on the south.

Mineralization is associated with the quartz fissure filling and altered country rock. The quartz contains disseminated pyrite, limonite, and occasional bunches of galena and sphalerite. Sampling indicates that the silicified granite hanging wall also carries gold values. High-grade samples are often associated with "bug hole" quartz containing spider-web iron staining and sulfides.

Results of August 1985 Sampling:

ASSAY REPORT SUMMARY

BOISE ASSAYER & METALLURGY  
REPORT OF: 8-14-85

LAB NO	SAMPLE DESCRIPTION	GOLD	GOLD	SILVER	SILVER	AU + AG TOTAL ORE VALUE/TON
		OZ/TON	\$/TON \$320 MKT	OZ/TON	\$/TON \$6.00 MKT	
20418	2801 - JINGO DUMP - COMPOSITE	.171	\$ 54.72	.92	\$ 5.52	\$ 60.24
20419	2802 - JINGO DUMP - COMPOSITE	.107	34.24	.94	5.64	39.88
20420	2803 - JINGO DUMP - COMPOSITE	.133	42.56	.76	4.56	47.12
20421	2804 - JINGO VEIN SAMPLE AT TOP JUST BELOW DISCOVERY POINT FROM BACK HOE CUT SOUTH SIDE	.026	8.32	.26	1.56	9.88
20422	2805 - JINGO VEIN SAMPLE AT TOP JUST BELOW DISCOVERY POINT FROM BACK HOE CUT NORTH SIDE	.168	53.76	1.25	7.50	61.26
20423	2806 - OUT-CROP AT EAST END OF THE JINGO CLAIM	.072	23.04	.34	2.04	25.08
20424	2807 - OUT-CROP AT WEST END OF THE HORNET CLAIM	.089	28.48	.11	.66	29.14
7 SAMPLES	TOTALS	.766	\$245.12	4.58	\$27.48	\$272.60
7 ASSAYS	AVERAGE VALUES	.1094	\$ 35.02	.6543	\$ 3.93	\$ 38.94

ASSAY REPORT SUMMARY

BOISE ASSAYER & METALLURGY  
REPORT OF: 10-15-85

LAB NO	SAMPLE DESCRIPTION	GOLD OZ/TON	\$320 MKT		SILVER OZ/TON	\$6.00 MKT		AU+AG TOTAL ORE VALUE/TON
			GOLD \$/TON			SILVER \$/TON		
22666	6801 - ROSE QUARTZ-FE STAIN WITH BLOOD RED STAINS	.322	\$ 103.04		5.33	31.98		\$ 135.02
22667	6802 - WHITE QUARTZ WITH GREEN & SOME FE STAIN	.009	2.88		.22	1.32		4.20
22668	6803 - BUG HOLE QUARTZ/SPIDER WEB OF FE STAIN + ORANGE	1.057	338.24		11.25	67.50		405.74
22669	6804 - GOUGE CONTACT @ FOOTWALL MOSTLY FOOTWALL GREEN	.131	41.92		.28	1.68		43.60
22670	6805 - BLUE GREEN QUARTZ WITH YELLOW-RED-FE-STAINS	.017	5.44		.39	2.34		7.78
22671	6806 - BLUE GREEN QUARTZ WITH WHITE QUARTZ STRINGERS AND LARGE PCS OF WHITE QUARTZ	.014	4.48		.22	1.32		5.80
22672	6807 - GRANITE LOOKING - GREEN-GRAY-BLACK & FE STAIN STRINGERS - DECOMPOSED ALTERED PYRITE & CU STAIN	.025	8.00		ND	-0-		8.00
22673	6808 - GRAY GREEN QUARTZ WITH LARGE PYRITE & FE STAINS	.034	10.88		.94	5.64		16.52
22674	6809 - BLUE GREEN GRANULAR QUARTZ WITH BROWN SPOTS & BLACK LEAF PATTERN - SOME BUG HOLE ON THE OUTSIDE	.004	1.28		.56	3.36		4.64
22675	6810 - FINE GRAIN QUARTZ - WITH CU STAINS & PYRITE SMALL	.299	95.68		2.86	17.16		112.84
22676	6811 - WHITE TO LIGHT GRAY QUARTZ WITH FE SPIDER WEB THRU OUT THE ROCK & SM BUG HOLE THRU OUT INSIDE FRACTURES ALMOST OPALIZED TO CALCITE APPEAR-	.734	234.88		8.18	49.08		283.96
22676	6811 - ANCE (CHECK SAMPLE)	.720	230.40		8.84	53.04		283.44

Results of May 1986 Sampling:

Sample Number	Description	Gold oz/ton	Silver oz/ton
872	Random chip sample of bull qtz o.c. 100' x 10' in north end center of Hornet claims.	0.013	ND
873	Cut 10' of granite with qtz seam exposed on north side prospect pit; little FeOx.	0.011	ND
874	Cut 12.5' of cross qtz structure in front of prospect pit; H.W. & F.W. not exposed.	0.013	ND
875	Cut 4' of qtz with l' intrusive on H.W. in	0.015	ND

	prospect pit; .1' FeOx zone in qtz F.W. not exposed.		
876	Cut 9.5' of SiO2 granite with FeOx-boxwork; sample only H.W. country rock; major shear gge.	0.010	0.36
877	Cut 8' qtz vn SiO2 granite with 1' gge-country rock from face caved adit above dump.	0.532	0.27
878	Grab -- high grade; FeOx staining rock from main dump.	0.802	1.95
879	Grab -- dump sample from #872.	0.011	0.07
880	Grab -- dump sample from #873.	0.014	ND
881	Grab -- dump sample from #874.	0.007	0.22
882	Grab -- dump sample from #875.	0.008	0.08
883	Grab -- dump sample from #876.	0.010	0.19