

ellis
park
geospatial

JINGO GOLD PROJECT

Idaho, U.S.A.

High-Grade Gold-Silver Fissure Vein System | Elmore County

LAND PACKAGE

~261 Acres

HISTORIC GRADE

1.28 oz/t Au

SILVER GRADE

6.7 oz/t Ag

UNDERGROUND

~600 ft Workings

MODERN SAMPLING

Up to 24.9 g/t Au



IDAHO LOCATION

Regional Mine Context — Idaho, U.S.A.

LOCATION CONTEXT

- South-central Idaho, Elmore County
- Situated within a prolific historic gold & silver mining belt
- Surrounded by active and historic operations including Sunshine Mining, Hecla, and Revival Gold districts
- Boise located ~50 km to the southwest

PROJECT POSITIONING

- Located within a well-endowed precious metals corridor
- Multiple analogous high-grade vein deposits in surrounding area
- Accessible terrain within established mining jurisdiction



REGIONAL CONTEXT

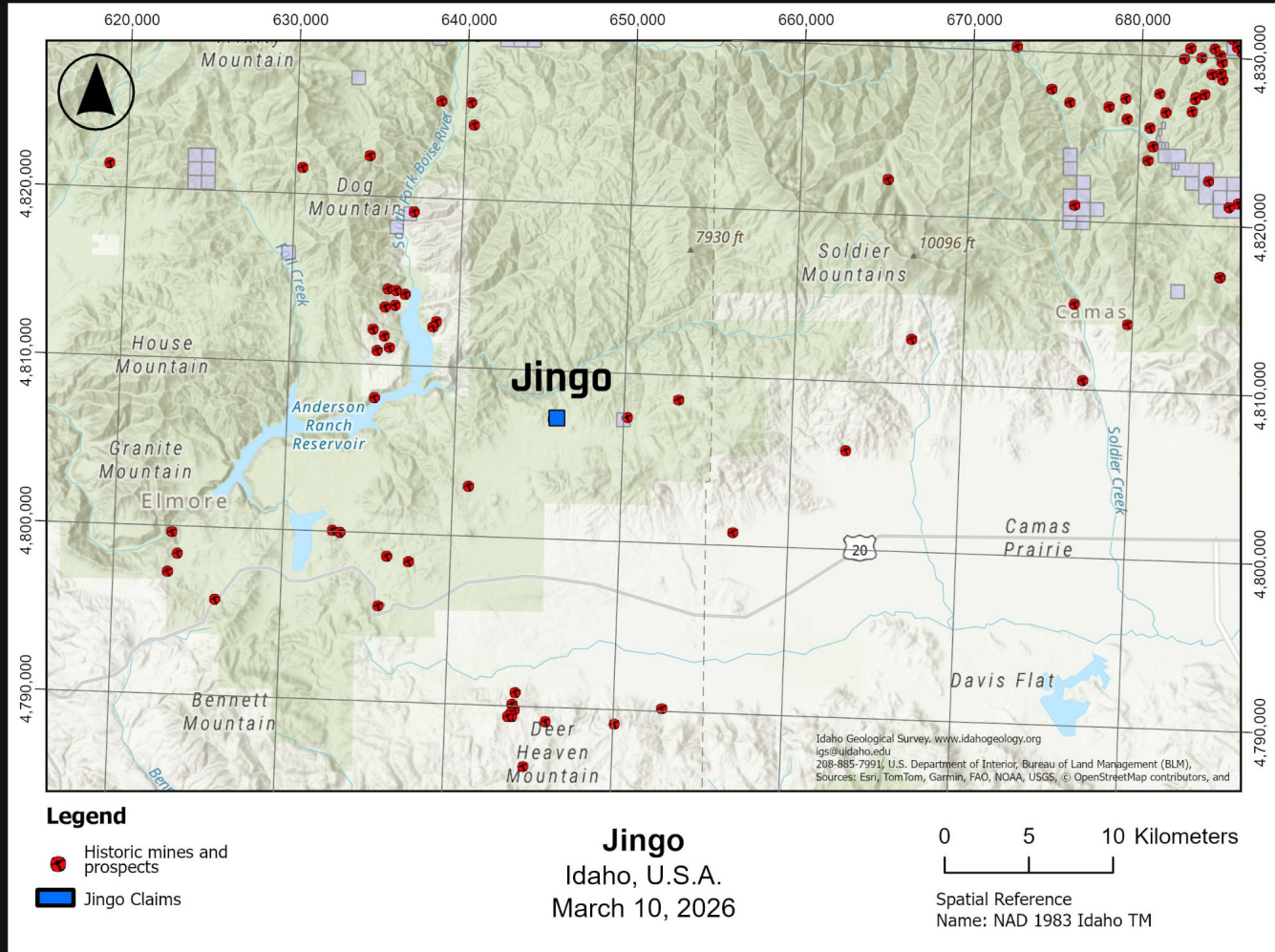
Historic Mine Distribution — Elmore County

REGIONAL SETTING

- Jingo project is centrally located within the Elmore County mining district
- Dozens of historic mine workings visible in the surrounding hills
- Anderson Ranch Reservoir and South Fork Boise River define the watershed
- Soldier Mountains and surrounding ranges mark the broader mineral belt

DISTRICT SIGNIFICANCE

- Multiple high-grade Au-Ag producers operated in this belt in the early 1900s
- Cluster of historic mines indicates a district-scale mineralizing system
- Jingo claims positioned on a key structural trend



GEOLOGICAL SETTING

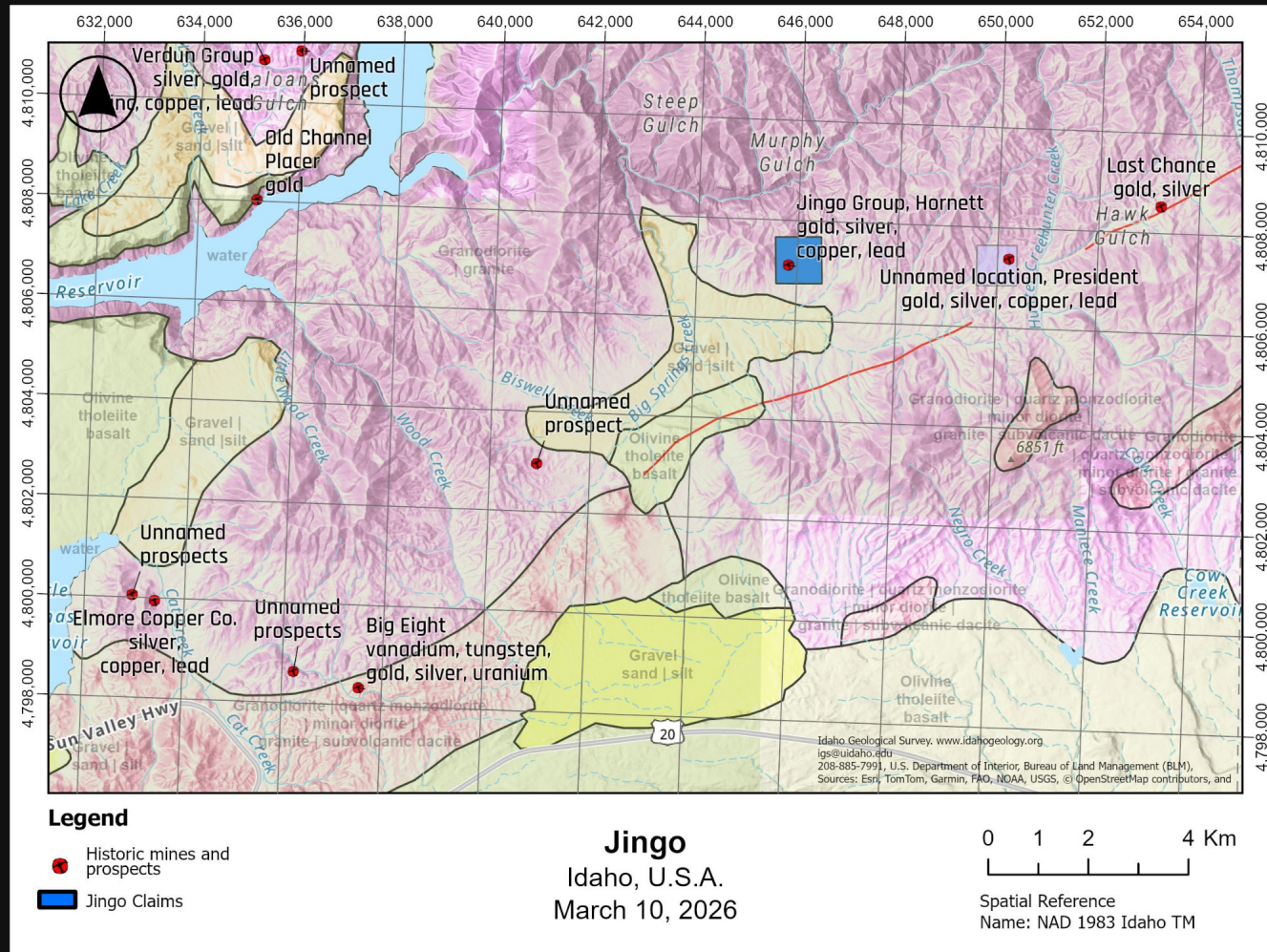
Bedrock Geology & Mineralization — Elmore County

GEOLOGICAL SETTING

- Property sits within granodiorite / quartz monzodiorite host rocks
- Flanked by olivine tholeiite basalt to the south and west
- Structural corridor hosts multiple Au-Ag-Cu-Pb vein occurrences
- Last Chance Au-Ag deposit located on the same structural trend to the northeast

DEPOSIT TYPE

- High-grade fissure vein system
- Quartz veins with steep dips (structurally controlled)
- Vein strikes ~N60°E, dips steeply south
- Systems of this type produce plunging ore shoots with significant vertical extent



PROPERTY DETAIL

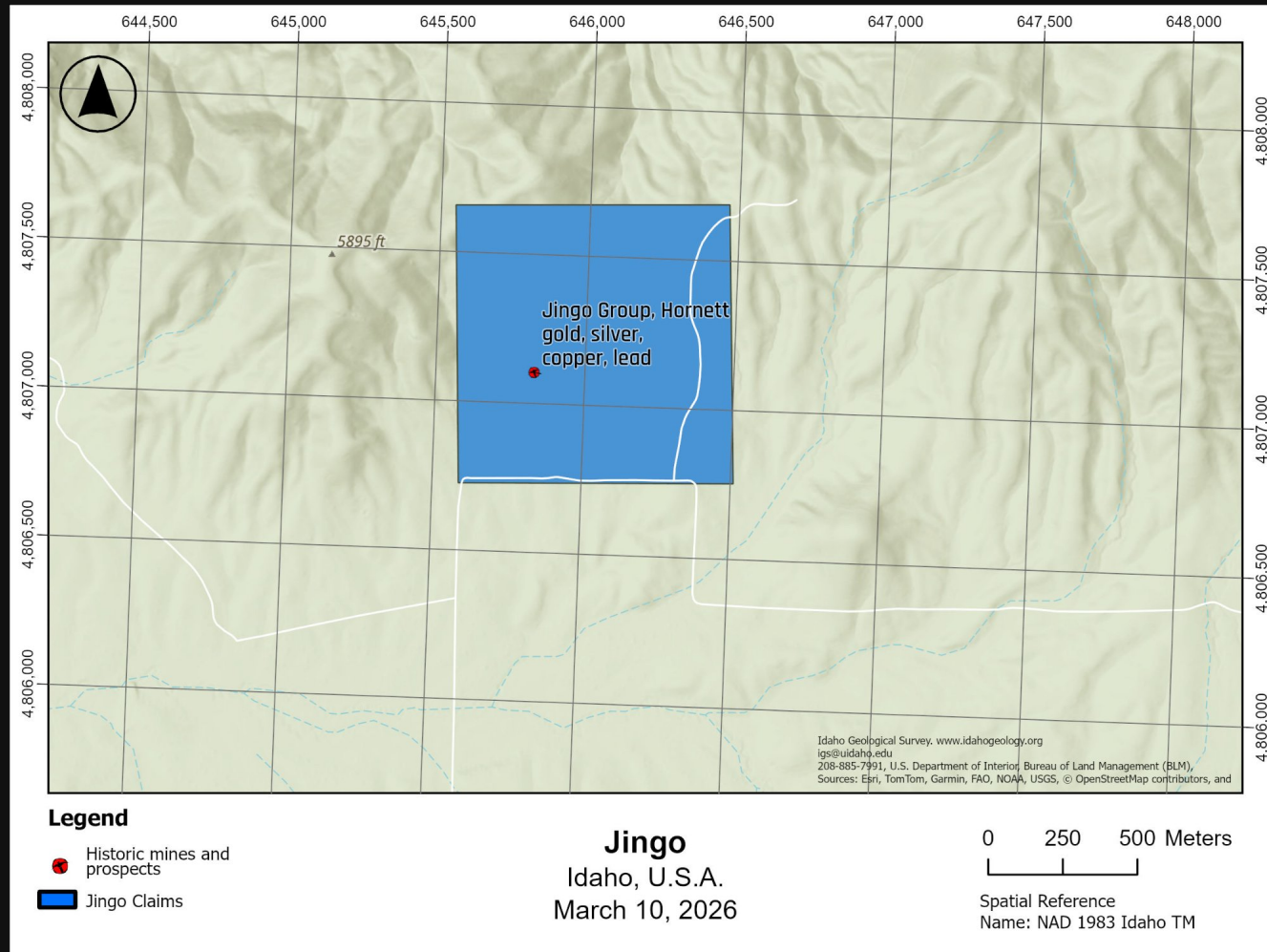
Jingo Claims — NAD 1983 Idaho TM

LAND PACKAGE

- ~261 acres (≈106 hectares) total claim area
- Claims: Jingo Group, Hornett, Velvet, Good Life
- Captures the known vein system and surrounding structures
- Land position sized to encompass along-strike extensions

HISTORIC WORKINGS

- ~600 ft (183 m) of underground development
- Workings include adits, drifts, and vein exposures
- Direct vein access confirmed through underground work
- Mine portal location marked on property



HISTORIC PRODUCTION & MODERN SAMPLING

HISTORIC PRODUCTION

Ore Shipped:	153 tons
Gold Grade:	1.28 oz/t Au (~39.8 g/t)
Silver Grade:	6.7 oz/t Ag (~208 g/t)
Classification:	Very strong shipping grades

HISTORIC DEVELOPMENT

- ~600 ft of underground workings
- Adits, drifts, and direct vein exposures
- Confirmed structural continuity of vein
- Examined by Sunshine Mining Co. geologists

MODERN SAMPLING (1980S)

Sample A:	24.9 g/t Au
Sample B:	16.6 g/t Au
Sample C:	10.0 g/t Au
Sample D:	9.0 g/t Au

Modern chip/grab samples confirmed high-grade gold mineralization remains exposed and accessible in historic workings.

EXPLORATION RECOMMENDATIONS

- Geophysical surveys (recommended by Sunshine Mining geologists)
- Core drilling program — no modern drilling completed
- Significant upside remains untested at depth

GEOLOGICAL INTERPRETATION & KEY STRENGTHS

GEOLOGICAL INTERPRETATION

- Vein strikes ~N60°E, dips steeply south
- Structural style consistent with plunging ore shoots
- High-grade veins of this type can extend hundreds of meters vertically
- Granodiorite host rock is a favorable structural trap for vein emplacement
- Multiple nearby Au-Ag occurrences confirm district-scale system

KEY METALS

Primary:	Gold (Au)
By-product:	Silver (Ag)

KEY STRENGTHS

Proven High-Grade Production

153 tons shipped at 1.28 oz/t Au — exceptional historic grades.

Underground Development

~600 ft of workings provide direct vein access and confirm structural continuity.

Modern Grade Confirmation

1980s sampling returned up to 24.9 g/t Au, validating historic data.

Extensive Land Position

~261 acres covering the full vein system and surrounding exploration targets.

Untested Drill Potential

No modern drilling completed — depth extension of vein remains open.

JINGO GOLD PROJECT

Idaho, U.S.A. | High-Grade Au-Ag Vein System

Prepared by Ellis Park Geospatial and HMK Mining | March 2026

